

# Signal Transducer

- Input / Output configuration selected via DIP switch combinations
- Choice of 16 analog input-output configurations
- Provides 3-way galvanic isolation of 3.75kV
- Fast output Response Time (<100ms)
- Sleek 22.5mm wide





## Ordering Information

Cat. No.	Description
2SC3D11CC3	Signal Transducer, 24VDC, 1 Input & 1 Output, Voltage & Current, 3 Port Isolation, Base / DIN

# Signal Transducer



<b>Cat. No.</b>	<b>2SC3D11CC3</b>
<b>Parameters</b>	
Supply Voltage ( $\oplus$ )	24 V DC
Supply Variation	-15% to + 15% (of $\oplus$ )
Power Consumption (Max.)	4 VA
<b>Device Characteristics</b>	
Input Signal	0-10VDC, 2-10VDC, 0-20mA DC, 4-20mA DC
Input Impedance	V-Approx. 100 K Ohm, I-100 Ohm approx.
Output Signal	0-10VDC,2-10VDC (min. 1 kOhm load) 0-20mA DC,4-20mA DC (max. 500 Ohm load)
Accuracy	1% of full Scale
Offset	$\pm$ 5% of full scale Adjustable
Gain	$\pm$ 10% of full scale Adjustable
Linearity	<0.02% of full scale
<b>Protections</b>	
Input supply reverse polarity	Yes
Input signal reverse polarity	Yes
Output short circuit current	<25mA (Output Voltage mode)
Output open circuit voltage	(12-14)VDC (Output Current mode)
LED Indication	GREEN LED: Power ON
Operating Temperature	-10°C to +55°C
Storage Temperature	-15°C to +60°C
Humidity (Non Condensing)	95% (Rh)
Enclosure	Flame Retardant UL94-V0
Dimension (W x H x D) (in mm)	22.5 X 83 X 100.5
Weight (unpacked)	130 g
Mounting	Base / DIN rail
Certification	 
Degree of Protection	IP 20 for Terminals, IP 40 for Enclosure

## EMI / EMC

ESD	IEC 61000-4-2
Radiated Susceptibility	IEC 61000-4-3
Electrical Fast Transients on Supply	IEC 61000-4-4
Electrical Fast Transients on I/O Signal	IEC 61000-4-4
Surge on Supply	IEC 61000-4-5
Surge on I/O Signal	IEC 61000-4-5
Conducted Susceptibility	IEC 61000-4-6
Voltage Dips & Interruptions (DC)	IEC 61000-4-29
Conducted Emission	CISPR 14-1
Radiated Emission	CISPR 14-1

## Environmental

Cold Heat	IEC 60068-2-1
Dry Heat	IEC 60068-2-2
Vibration	IEC 60068-2-6
Repetitive Shock	IEC 60068-2-27
Non-Repetitive Shock	IEC 60068-2-27

# Signal Transducer



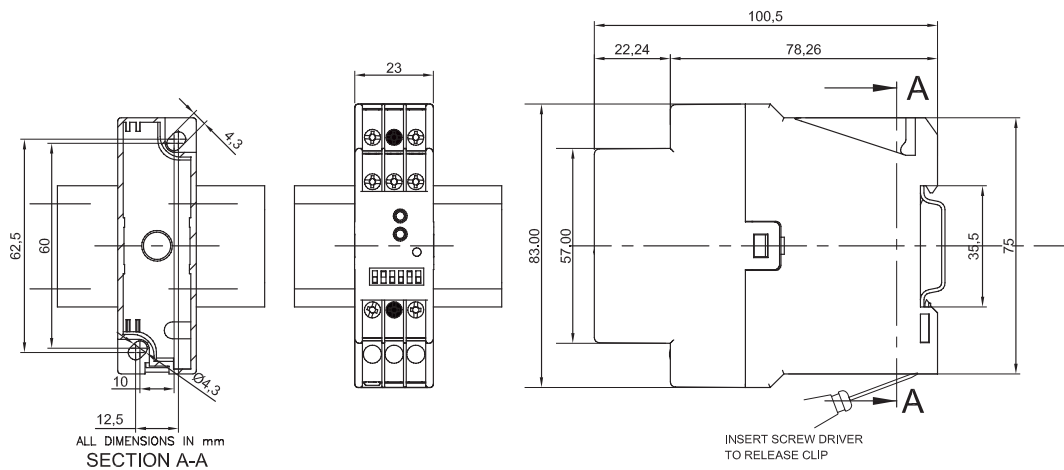
## DIP SWITCH MODE SELECTION

### SIGNAL TRANSDUCER-SERIES 225 SELECTION OF INPUT & OUTPUT SIGNAL MODE

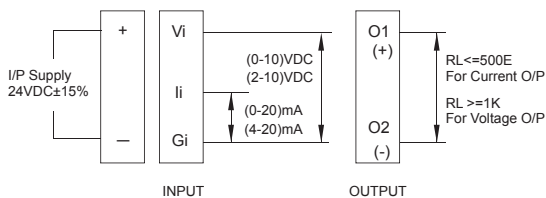
Mode	Input Voltage / Current (DC)	Output Signal
	– (0-10)V (0-20)mA	(0-10)V
	– (0-10)V (0-20)mA	(0-20)mA
	– (0-10)V (0-20)mA	(2-10)V
	– (0-10)V (0-20)mA	(4-20)mA
	– (2-10)V (4-20)mA	(0-10)V
	– (2-10)V (4-20)mA	(0-20)mA
	– (2-10)V (4-20)mA	(2-10)V
	– (2-10)V (4-20)mA	(4-20)mA

1 2 3 4 5 6

## MOUNTING DIMENSIONS (mm)

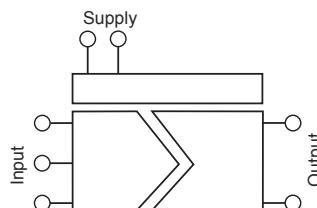


## CONNECTION DIAGRAM



## 3 PORT ISOLATION DIAGRAM

3,75kV AC (input, supply and output)



## TERMINAL TORQUE & CAPACITY

	0.60 N.m (6 Lb.in)
Ø 3.5 mm...4.0mm	1 x 4.0 mm <sup>2</sup> Solid/Stranded Wire
AWG	1 x 20 to 10