

Signal Transducer

- Input / Output configuration selected via DIP switch combinations
- Choice of multiple analog input-output configurations
- Provides 3-way galvanic isolation of 3.75kV
- Fast output Response Time (<100ms)
- Sleek 22.5mm wide





Ordering Information

Cat. No.	Description
2SC3D11CC3	Signal Transducer, 24 VDC, 1 Input & 1 Output, Voltage & Current, 3 Port Isolation, Base / DIN, Input Signal: 0-10 VDC, 2-10 VDC, 0-20 mA, 4-20 mA
2SC3D11DC3	Signal Transducer, 24 VDC, 1 Input & 1 Output, Voltage & Current, 3 Port Isolation, Base / DIN, Input Signal: 0-5 VDC, 1-5 VDC, 0-20 mA, 4-20 mA
2SC3D11EC3	Signal Transducer, 24 VDC, 1 Input & 1 Output, Voltage & Current, 3 Port Isolation, Base / DIN, Input Signal: 0-10 VDC, 2-10 VDC, 0-10 mA, 2-10 mA

Signal Transducer



Cat. No.	2SC3D11CC3	2SC3D11DC3	2SC3D11EC3
Parameters			
Supply Voltage (ϕ)	24 V DC		
Supply Variation	-15% to +15% (of ϕ)		
Power Consumption (Max.)	4 VA		
Device Characteristics			
Input Signal	0-10V DC 2-10V DC 0-20mA DC 4-20mA DC	0-5 V DC 1-5 V DC 0-20mA DC 4-20mA DC	0-10V DC 2-10V DC 0-10mA DC 2-10mA DC
Input Impedance	Voltage I/P - 100K Ohm approx. Current I/P - 100 Ohm approx.		Voltage I/P - 100K Ohm approx. Current I/P - 200 Ohm approx.
Output Signal	0-10VDC, 2-10VDC (min. 1 kOhm load) 0-20mA DC, 4-20mA DC (max. 500 Ohm load)		
Accuracy	1% of full Scale		
Offset	\pm 5% of full scale Adjustable		
Gain	\pm 10% of full scale Adjustable		
Linearity	<0.02% of full scale		
Protections			
Input supply reverse polarity	Yes		
Input signal reverse polarity	Yes		
Output short circuit current	<25mA (Output Voltage mode)		
Output open circuit voltage	(12-14)VDC (Output Current mode)		
LED Indication	GREEN LED: Power ON		
Operating Temperature	-10°C to +55°C		
Storage Temperature	-15°C to +60°C		
Humidity (Non Condensing)	95% (Rh)		
Enclosure	Flame Retardant UL94-V0		
Dimension (W x H x D) (in mm)	22.5 X 83 X 100.5		
Weight (unpacked)	130 g		
Mounting	Din Rail Mounting		
Certification	 		
Degree of Protection	IP 20 for Terminals, IP 40 for Enclosure		

EMI / EMC

ESD	IEC 61000-4-2
Radiated Susceptibility	IEC 61000-4-3
Electrical Fast Transients on Supply	IEC 61000-4-4
Electrical Fast Transients on I/O Signal	IEC 61000-4-4
Surge on Supply	IEC 61000-4-5
Surge on I/O Signal	IEC 61000-4-5
Conducted Susceptibility	IEC 61000-4-6
Voltage Dips & Interruptions (DC)	IEC 61000-4-29
Conducted Emission	CISPR 14-1
Radiated Emission	CISPR 14-1

Environmental

Cold Heat	IEC 60068-2-1
Dry Heat	IEC 60068-2-2
Vibration	IEC 60068-2-6
Repetitive Shock	IEC 60068-2-27
Non-Repetitive Shock	IEC 60068-2-27

Signal Transducer



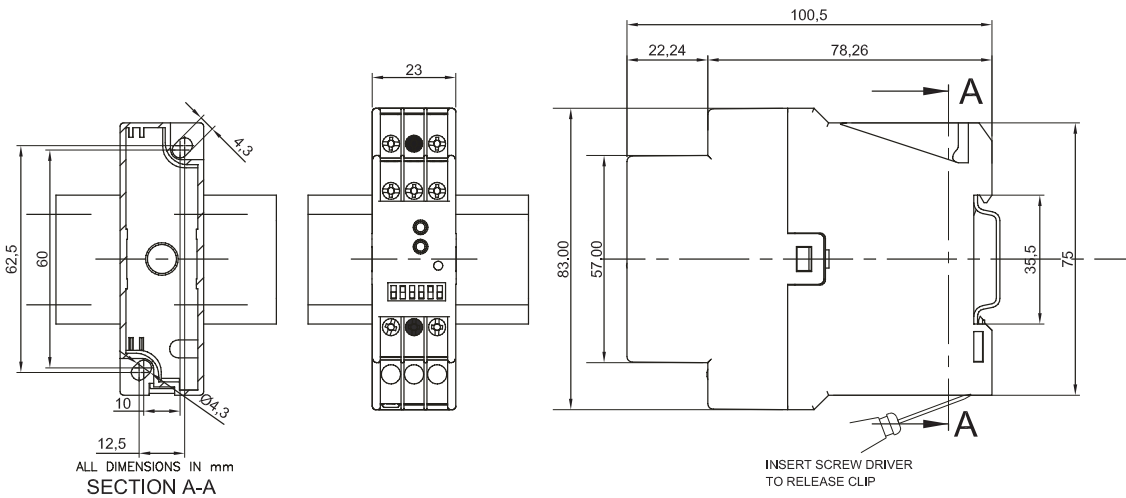
DIP SWITCH MODE SELECTION

SIGNAL TRANSDUCER-SERIES 225 SELECTION OF INPUT & OUTPUT SIGNAL MODE

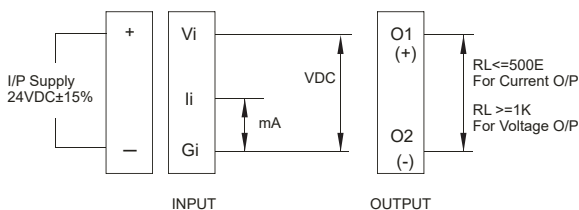
Mode	Input Voltage / Input Current			Output Signal
	2SC3D11CC3	2SC3D11DC3	2SC3D11EC3	
	(0-10)V / (0-20)mA	(0-5)V / (0-20)mA	(0-10)V / (0-10)mA	(0-10)V
	(0-10)V / (0-20)mA	(0-5)V / (0-20)mA	(0-10)V / (0-10)mA	(0-20)mA
	(0-10)V / (0-20)mA	(0-5)V / (0-20)mA	(0-10)V / (0-10)mA	(2-10)V
	(0-10)V / (0-20)mA	(0-5)V / (0-20)mA	(0-10)V / (0-10)mA	(4-20)mA
	(2-10)V / (4-20)mA	(1-5)V / (4-20)mA	(2-10)V / (2-10)mA	(0-10)V
	(2-10)V / (4-20)mA	(1-5)V / (4-20)mA	(2-10)V / (2-10)mA	(0-20)mA
	(2-10)V / (4-20)mA	(1-5)V / (4-20)mA	(2-10)V / (2-10)mA	(2-10)V
	(2-10)V / (4-20)mA	(1-5)V / (4-20)mA	(2-10)V / (2-10)mA	(4-20)mA

1 2 3 4 5 6

MOUNTING DIMENSIONS (mm)

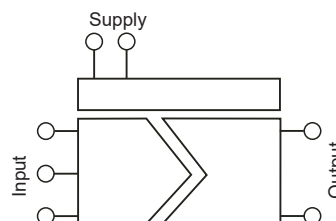


CONNECTION DIAGRAM



3 PORT ISOLATION DIAGRAM

3,75kV AC (input, supply and output)



TERMINAL TORQUE & CAPACITY

	0.60 N.m (5.3 Lb.in)
Ø 3.5 mm...4.0mm	1 x 4.0 mm ² Solid/Stranded Wire
AWG	1 x 20 to 10